

Norway - Gaula Flyfishing Lodge

Fly Fishing for Atlantic Salmon on the Gaula River in Mid-Norway.

Fishmaster runs a world class Gaula Flyfishing Lodge. We have a prolific private 9,5 km long Gaula Flyfishing beat located in middle part of the Gaula River, near Stören, up and downstream of the mighty Gaulfossen. The beats consist several of the best fly fishing pools of River Gaula – Bruahölen, Evjen, Evjenöra, Helgemo, Helgemo svingen, Hovinsgjerdet, Lerdalshölen, Röskaft, Röskaft Søndre Övre, Röskaft Søndre, Sanden, Stasjonshölen, Svingen and Vollan. Biggest fish of the beat is 20,8 kg salmon caught on Bruahölen pool.

Gaula. Gaula is one of the best salmon rivers in Norway and flows into the sea near Trondheim. Gaula is famous for its big size salmon, the biggest ones are around 20 kilos. The average size of salmon is 5-7 kg. The annual salmon catch from the Gaula River varies between 4000-6000 salmon.

Gaula Flyfishing Lodge - Rotation. The guests fish our beautiful, private Gaula Flyfishing beats situated in middle Gaula, downstream from Stören in Hovin and Lundamo, about 25-40 km from the sea. The beats consist of 6,8 km of East bank and 2,7 km of West bank of the famous Gaula River. Maximum number of persons fishing on these beats is 16-20 depending of the week. The guests are divided in 4-5 groups of 4 persons each. Every group of 4 persons can fish 1-2 beats at a time. The beats are rotated between fly fishing groups every six hours. In fishing rotation the beat change hours are 6:00, 12:00, 18:00 ja 24:00.

Fly Fishing Beats. The private stretches of river are divided in 9 fly fishing beats. Beat 1: Sanden pool. Beat 2: Bruahölen, Svingen and Rönningen pools. Beat 3: Vollan and Röskaft pools. Beat 4: Stasjonshölen pool. Beat 5: Evjenöra and Evjen pools. Beat HE1: Lerdalshölen and Helgemo pools. Beat HE2: Helgemo svingen pool. Beat HG: Hovinsgjerdet beat is included in rotation 1. June-7. July and 31.7.-31. August 2024. Beat RS: Röskaft Søndre Övre and Röskaft Søndre is in rotation 1.-22. June and 13. July-31. August 2024.

Fishing Rules. All salmon and seatrout caught must be reported immediately to Laksebörsen by using www.elveguiden.no or Elveguiden app with your mobile phone. Only fly fishing with fly rod is allowed. Rod sharing is not allowed. Bag limit is one salmon per person per day. If fisherman kills a salmon, he must stop fishing until midnight. The weekly bag limit is 2 salmon and season limit is 4 salmon per person, only 1 salmon may be 80-95 cm. All salmon over 95 cm must be released. If person retains second salmon for the week, he can next day continue C&R fishing until end of that week. Catch & release bag limit is 3 released salmon per person per day. All female salmon must be released 1.7-31.8. All seatrout must be released.

We recommend catch and release. If a fish that according to the rules should be released is bleeding and dying, it must be delivered to Gauldalsporten. Delivered salmon is counted on personal quotas. If water level at Gaulfossen gauge drops below 20 cubics per second, only full floating fly lines are allowed. The floating line rule ceases when water level raises over 25 cubics per second at Gaulfossen.

Fishing Season. Fishing season on the Gaula starts on the first of June. During the two first weeks of the season only big salmon enter the river weighing often 7-20 kg. At this time you have a good chance to hook and catch a salmon of your lifetime. During the early season water level on Gaulfossen gauge is often 400-150 cubics per second and water temperature is about 6-10 degrees. For these high and cold water conditions as fly lines we recommend shooting heads sink 1/3/5, sink 2/4/6, sink 3/5/8 and sink 4/5 and sink 6/7. In these conditions tube flies with 8-13 cm long wing are recommended.



By mid June the numbers of salmon in the Gaula increase and in addition to big salmon there is often a good run of two sea winter salmon weighing 4-7 kg. The main run of salmon in Gaula River is from early July to mid August, that period we can catch all sizes of salmon and the catch numbers per week are highest. The water level is often between 150-30 cubics per second and water temperature is 10-16 degrees. For these medium water conditions we recommend our guests to fish for example with Int/S2/S4, Float/S2/S4 and Float/Int/S2 shooting heads and tube flies with a wing length 4-8 cm.



During the last two weeks of August there are still some fresh salmon running but we also catch coloured salmon which have been in the river for a while - often very big ones. During late season the water level on Gaulfossen gauge is often between 60-20 cubics per second and water temperature is 9-15 degrees. For these medium/low water conditions we recommend to fish with Float/S2/S4, Float/Int/S2 and Floating shooting heads and tube flies wing length 4-6 cm. Gaula fishing season ends on the last day of August.



Fly Fishing Tackle. For fly fishing salmon on the Gaula we recommend 13-15 feet double handed rods for lines #8-11 and fly reels with good quality brakes. Floating, sink tip or intermediate shooting heads are most popular fly lines but bring also sinking shooting heads for possible high water conditions.

Disinfection. Before fishing starts everyone must disinfect fishing gear and buy a Norwegian state license and Gaulakortet. State license can be bought from internet and disinfection can be done at Gauldalsporten in Støren. Keep state license and Gaulakortet/ disinfection certificate with you when fishing.



Flies. Good fly patterns are Green Butt, Red Butt, Black Sheep, Dee Sheep, Willie Gunn, Green Highlander, Greenlander, Sunray Shadow, Monkey, Grey & Green, Black & Green, Black & Yellow, Black & Orange, Banana.

Lodge Accomodation for anglers is arranged in Hage, Hage stabbur, Helgemo, Röskaft Søndre and Öran. These houses are located close to the Gaula Flyfishing beats and they have been restored for fishermen. There is a big living room, a well equipped kitchen, several bedrooms for 1-2 persons, freezer, toilet and shower. The sheets, pillow case and towel are included and are ready in your bed. Guests can cook their meals in self catering kitchen but food is not included in price. Cleaning of the houses start on Saturday morning at 10 o'clock, guests should leave the house in time.



Travel Arrangements. Fly fishing trips to the Gaula Flyfishing Lodge will be arranged throughout the fishing season. Anglers will take flight or car transport to Norway. It is about 80 km/one hour car drive from Trondheim airport to the lodge. Jouni Rauha works as a lodge manager, shows the accomodation and introduces fishing beats to guests. Week begins at 16 o'clock on Saturday afternoon and ends next Saturday morning at 10. Introduction of the beats for new guests will be arranged on Saturday at 18.



Price includes: Rotation fly fishing - Self catering accomodation - Introduction of beats

Price excludes: Flights/car transports - Norwegian fishing license (310 NOK = 30 eur) - Gaulakortet (200 NOK = 20 eur), Disinfection of fishing gear (includes in Gaulakortet) - Food/drinks

Bookings. Deposit is 50% of total price. Balance of 50 % has to be paid before the first of March. An invoice for balance payment will be forwarded and payment can be made via wire transfer to Fishmaster bank account.

Cancellation. Deposit and balance payments are non-refundable. We recommend travel insurance that covers customers costs in case of cancellation.

River closure. If the Gaula will be temporarily closed for fishing, for example due to extremely low water or high temperature, period will not be refunded or rebooked for anglers. We recommend travel insurance.

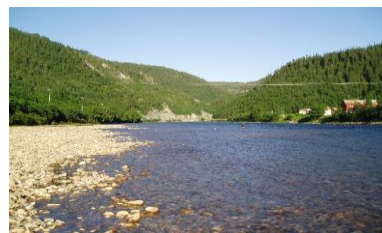
Pandemic. Due to pandemic no cancelling, refunding or postponing Gaula Flyfishing Lodge bookings. In case of possible travel restrictions we can try to resell your booking to other anglers. Only if we can resell your booking, postponing to next season will be possible. We recommend travel insurance for all anglers.

Gaula Flyfishing Lodge - Beats

We have a prolific private 9,5 km long Gaula Flyfishing beat in middle/lower part of the Gaula River, up and downstream of the Gaulfossen and 25-40 km from the sea. The beats consist of 6,8 km of East bank and 2,7 km of West bank of the famous River Gaula.

Beat 1 - Sanden

Sanden. Right bank. Sanden is a classic salmon pool. It is 600 meters long and has a nice current which suits great for fly fishing. It's one of the most prolific of our salmon pools. In this pool salmon tend to stop for rest even longer period. In the middle of pool there is a long deeper place in front of huge stone. The tail of pool before short rapids is also a hot spot place for catching big salmon. Sanden fishes well at many different water levels between 450-10 cubics per second.



Beat 2 - Bruahölen, Svingen, Rønningen

Bruahölen. Right bank. Bruahölen is a very long and prolific pool, typical holding pool, length is 700 meters. The upper part fishes well in low water. From middle towards the end of pool it is good water all the way and it fishes well all water levels. Bruahölen is very easy pool to wade. A Salmon of 20,8 kg has been caught at Bruahölen. Bruahölen pool fishes well with 400-10 cubics.



Svingen. Right bank. Svingen is 600 meters long. It starts with short fast rapids which then slows down. In this pool salmon tends to stop for longer periods and you see lot of jumping salmon. Svingen is a typical holding pool. The riverbank is steep, no need for wading at all. The best taking places here are from middle of the pool towards the end of pool. Svingen fishes best from middle to low water levels between 100-20 cubics per second.



Rønningen. Right bank. Rønningen pool is 200 meters long. The riverbank is here quite high and steep. There is no need for wading at all. There is a nice current here and fly swims very nice, there is also no need for long casts. The pool is quite deep. Rønningen fishes best in water levels 200-100 cubics.



Beat 3 – Vollan, Röskaft

Vollan. Right bank. Vollan beat is 700 meters long, it is located 1 km upstream from Gaulfossen, lower border of Vollan is upper border of Stasjonshölen. The beat is located on East side of the Gaula river, right side of river looked downstream. Vollan includes long nice gravel bar run followed by deep hole, nice tail of pool and short rapids. Vollan fishes best with water levels between 200-10 cubics per second.



Röskaft. Left bank. Röskaft is 200 meters long and a quite fast flowing pool. The deepest places of this pool are in the middle and tail of pool. It has a nice current for flyfishing all the way and is very easy pool to fish. Pool ends to fast rapids and is a pool where salmon tends to stop after they run up those rapids. Röskaft is located about 1 km below Gaulfossen on the West (Left) side of the Gaula. Röskaft fishes best between 400-40 cubics.



Beat 4 – Stasjonshölen

Stasjonshölen. Left and right bank. Stasjonshölen is 300 meters long on West side and 200 meters long on East side of Gaula. We can fish both sides but West side is easier to fish and more productive. Stasjonshölen is very easy pool to wade. In the middle of pool there is a deep hole. From middle towards the tail of pool there is stronger current. A 20 kg salmon has been caught at Stasjonshölen. The pool fishes water levels between 250-30 cubics.



Beat 5 – Evjenöra, Evjen

Evjenöra. Left bank. Evjenöra pool is 500 meters long and is located 3 km below Gaulfossen on the West (Left) side of the Gaula. Evjenöra pool has a nice current for flyfishing all the way and is very easy pool to cover well with fly. Evjenöra is a very easy pool to wade. In the middle of the pool there is a deeper area which is one of the hot spots. A 20 kg salmon has been caught at Evjenöra pool. The pool can be fished in water levels between 400-20 cubics.



Evjen. Left bank. Evjen pool is 600 meters long and is located about 3 km below Gaulfossen on the West (Left) side of the Gaula. The riverbank is quite high and steep. There is no need for wading at all. In this pool salmon tends to stop for longer periods and you often see lot of jumping salmon. There is no need for long casts because salmon stops here often close to riverbank. A salmon over 20 kg has been caught at Evjen. The pool is long and deep, it is very beautiful and prolific pool and can be fished well in most water levels between 400-20 cubics.



Beat HE1 – Lerdalshölen, Helgemo

Lerdalshölen. Right bank. Lerdalshölen pool is 500 meters long and is located 7 km below Gaulfossen on the East (Right) side of the Gaula. In this pool salmon tends to stop for longer periods and you often see jumping salmon. In high water salmon stops here often close to riverbank, in medium water in the middle of river or closer to opposite bank. Lerdalshölen fishes well with water levels 400-60 cubics per second at Gaulfossen gauge.



Helgemo. Right bank. Helgemo pool is 500 meters long and is located 7 km below Gaulfossen on the East (Right) side of the Gaula. Helgemo pool has a nice current for flyfishing all the way and is very easy pool to cover well with fly. Helgemo is a very easy pool to wade. In the lower part of the pool there is a deeper area with big underwater stones, which is one of the hot spots. The pool can be fished in water levels between 200-20 cubics at Gaulfossen.



Beat HE2 – Helgemo svingen

Helgemo svingen. Left and right bank. Helgemo svingen is a very productive and long pool. It is 600 meters long on West side and 500 meters on East side of the Gaula. We can fish both sides but Left bank is easier to fish and more productive, especially in high and medium water. Helgemo svingen is quite easy pool to wade and cover well with fly. In the middle of the pool there is a deep hole. The pool fishes best with water levels between 450-40 cubics.



Beat HG - Hovinsgjerdet

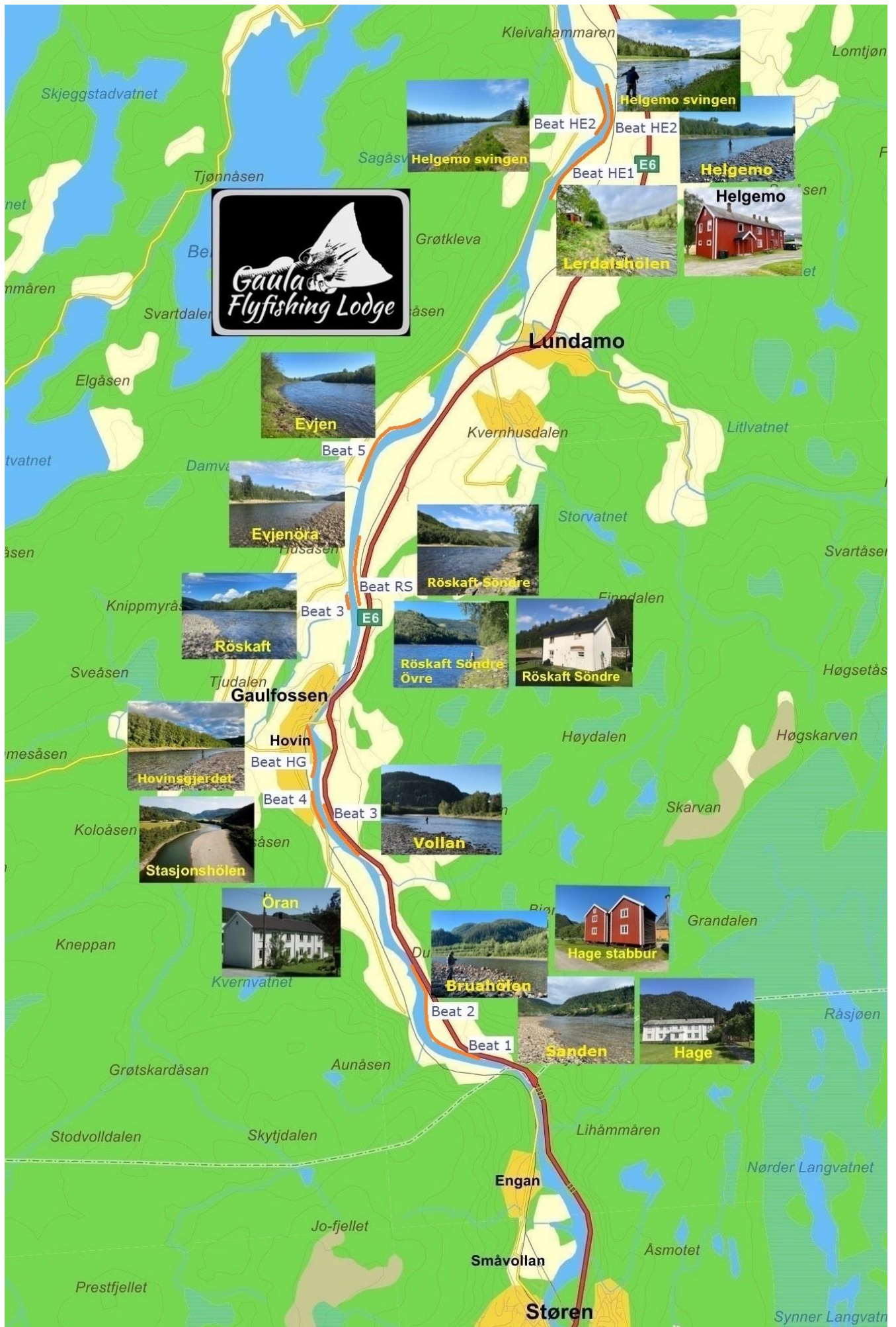
Hovinsgjerdet (HG). Left bank. Hovinsgjerdet beat is 500 meters long and is situated right above the Gaulfossen on West (Left) side of the Gaula. Salmon tends to stop in the pool after they run up Gaulfossen rapids. Hovinsgjerdet beat fishes best with water levels below 80 cubics. Parking is by the Hovin water cleaning station. From left side of yellow building begins path down to the beat. Be careful when crossing railway, keep your fly rod low. The beat is located inside of the nature reserve, it is forbidden to make fire.



Beat RS - Röskaft Søndre Övre, Röskaft Søndre

Beat RS. Right bank. Beat RS is approx 1 km long and is located 1 km below Gaulfossen on the East (Right) side of the Gaula. **Röskaft Søndre Övre** pool is 200 m long and is located above fast rapids. **Röskaft Søndre** pool is 700 m long and is located below fast rapids. Salmon tends to stop in these two fine salmon pools. RS is a very famous and prolific beat and fishes well in in most water levels between 400-20 cubics.

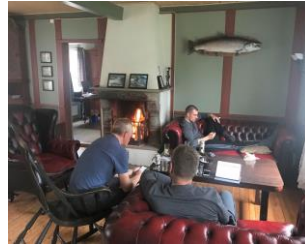




Gaula Flyfishing Lodge – Accomodation

Hage

- * Large kitchen
- * Lounge, diningroom
- * 3 x shower, 3 x WC
- * Drying room, sauna
- * 2 x single room
- * 5 x double room



Hage stabbur

- * Large kitchen
- * Lounge/dining room
- * 2 x shower, 2 x WC
- * 2 x single room
- * 1 x double room



Helgemo

- * Large kitchen
- * Lounge/dining room
- * 2 x shower, 2 x WC
- * 4 x double room
- * 1 x triple room



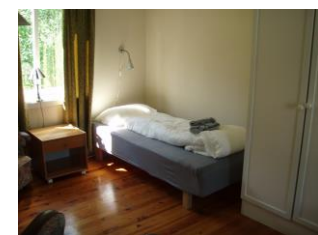
Röskaft Söndre

- * Kitchen
- * Lounge/dining room
- * Shower, WC
- * 4 x single room



Öran

- * Kitchen
- * Lounge/dining room
- * Shower, WC
- * 2 x single room
- * 3 x double room



Bookings. Deposit is 50% of total price. A booking confirmation and an invoice for payment will be forwarded with the deposit due 30 days. The payment can be made via wire transfer to Fishmaster bank account. Balance of 50 % of total price has to be paid before the first of March. An invoice for balance payment will be forwarded and payment can be made via wire transfer to Fishmaster bank account.

Cancellation. Deposit and balance payments are non-refundable. We recommend travel insurance that covers customers costs in case of cancellation.

River closure. If the Gaula will be temporarily closed for fishing, for example due to extremely high water temperature, period will not be refunded or rebooked for anglers. We recommend travel insurance.

Pandemic. Due to pandemic no cancelling, refunding or postponing Gaula Flyfishing Lodge bookings. In case of possible travel restrictions we can try to resell your booking to other anglers. Only if we can resell your booking, postponing to next season will be possible. We recommend travel insurance for all anglers.

Gaula - Flies



Black Sheep

Tag: Red
Butt: Red
Body: Black floss
Rib: Silver
Hackle: Blue
Wing: Black and yellow
Head: Red or black conehead



Gaula Green Butt

Tube: 1/2 inch brass tube
Tag: Silver
Tail: Fluorescent green
Body: Black floss
Rib: Silver
Hackle: Yellow and black
Wing: Black
Head: Black



Greenlander

Tube: 1/2 inch brass tube
Tag: Fluorescent green
Butt: Fluorescent green
Body: Pearly ice-dubbing
Rib: Silver
Body hackle: Olive green
Front hackle: Black and white (badger cock)
Wing: 1/3 yellow, 1/3 light green, 1/3 black
Head: Light green



Willie Gunn

Tube: 1/2 inch brass tube
Body: Black floss
Rib: Silver
Hackle: Blue
Wing: 1/3 yellow, 1/3 orange, 1/3 black
Yellow Angel hair between wing parts
Head: Black



Black & Yellow

Tube: 1/2 inch brass tube
Body: Gold/Brass
Wing: 1/2 dirty yellow, 1/2 black
Yellow Angel hair between wing
Head: Black



Green Monkey

Tube: 1/2 inch brass tube
Body: Fl. green Flat Braid
Rib: Silver
Wingi: Fl. green polar bear, black ape
Head: Black

Gaula Flyfishing Lodge - Tackle List

General

Hat with bill
Polarized sunglasses
Long sleeve shirts, sweaters, fleeces
Short sleeve shirts, t-shirts (several)
Underwear
Warm, long underwear to use under waders
Fleece pants, fleece shirt
Long pants
Warm socks, several
Shorts
Sandals or camp shoes
Raingear or wading jacket
Sunblock, Insect repellent
Camera, memory cards, extra batteries, battery charger
Backpack (to carry camera & other gear)
Small flashlight
Mobile phone
Water bottle, thermos bottle
Garbage bags or waterproof bags for laundry and wading boots.
Books, magazines
Passport (If you come outside EU) or proof of citizenship
Airline tickets and other travel documents
Pre-trip information, maps, addresses, Fishmaster phone number (+358-400-824530)
Credit card, cash, norwegian crowns for disinfection, state fishing license, food, gift shopping
Notebook and pen
Liquor
Food (Best to buy in Norway)
Toiletries; Razor, tooth brush, shampoo, hand lotion, bandages
Pain killers, Prescription medications
Rod holder for car

Fishing Equipment

Fly rods, rod tubes (Rods 13'-15' # 8-11)
Fly reels, reel covers, spare spools
Fly lines, leaders
Fly boxes, flies
Waders, wading belt, repair kit for waders
Wading boots
Reel lube/oil
Pliers (rustproof), Hemostats
Hook hone/file
Extra spools monofilament: 0.35, 0.40, 0.45
Needle clippers
Fly tying gear
Tape measure, Scale